



\$ 412,900

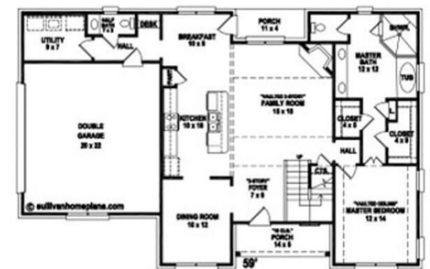


Floor Plan Model – Hazel B

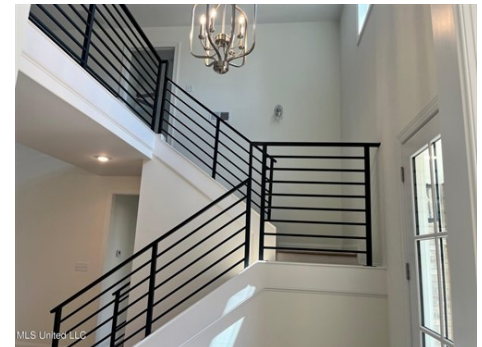
MLS United LLC



MLS United LLC



MLS United LLC



MLS United LLC

5310 John Neilsen Way, Olive Branch, MS 38654

- » Beds: 4 | Baths: 2 Full, 1 Half
- » MLS #: 4113009
- » Single Family | 2,300 ft² | Lot: 30,492 ft² (0.7 acres)
- » More Info: [5310JohnNeilsenWayOliveBranch.IsForSale.com](https://www.5310JohnNeilsenWayOliveBranch.IsForSale.com)



Jennie Holliday

(901) 334-6961 (mobile)
(662) 548-2000 (office)
holliday@collins-maury.com
<https://www.hollidaysellshomes.com>



Coldwell Banker Collins-Maury
3276 Goodman Rd E
Southaven, MS 38672
(662) 548-2000

Welcome to one of Meridian's most sought-after floor plans - The Hazel B with a sideload garage. Located on a quiet cul-de-sac, this model is designed with functionality as-well-as comfort in mind and it offers an ideal layout for both everyday living and entertaining. From the inviting front porch, step into a light-filled foyer with sightlines that extend all the way to the backyard. The main level flows beautifully, with the formal dining room (or flexible living space) and central hallway leading seamlessly into the open-concept kitchen, breakfast area, and spacious family room. A thoughtful layout allows for easy access from the garage to the kitchen - perfect for unloading groceries with ease. Natural light fills every corner, creating a warm and welcoming atmosphere throughout the day. Just off the family room, you'll discover your private retreat - a generously sized primary suite complete with a spa-like bath, featuring dual vanities, a tiled shower, soaking tub, and a very large walk-in closet. Upstairs, three additional bedrooms and a full bath offer plenty of space for family, guests, or a home office. Whether you're hosting or relaxing, there's room for your modern lifestyle. Estimated completion: Q4 2025. Don't miss your chance to own this beautiful new home - call today to schedule your private tour! Note: Seller is a licensed Mississippi Broker. Photos are for example only of another Hazel Model. Not This Home.

